



## Gel Doc™ EZ Imager

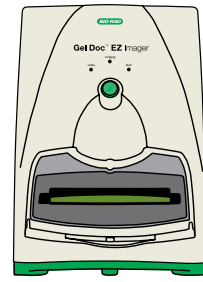
Accelerate your research. Push-button imaging in just 10 seconds.



# EZ imaging...

Pick your tray and get your results

1



LOAD TRAY



## Smart Tray Technology™

Take the guesswork out of imaging.

**Automatic recognition** — smart technology recognizes your application-specific tray and adjusts imaging parameters and software options accordingly

**Customizable protocols** — Image Lab™ software allows tray- and user-specific protocols to be saved and recalled at the push of a button

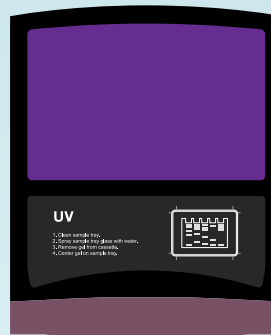


## Personalized Imaging

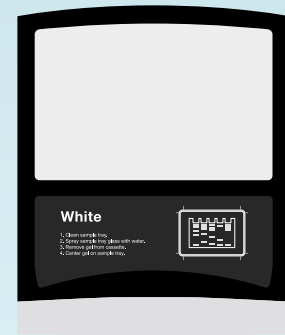
Customize your imaging workflow.

**Modular flexibility** — select trays based on your application needs. Modular design provides imaging ease and maintenance

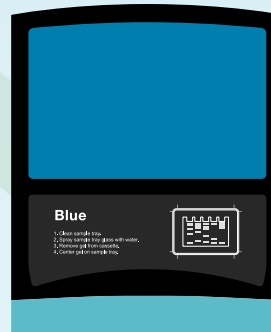
**Simple recall** — color-coded trays and default protocols at the push of a button simplify imaging to a new level



UV Tray



White Tray



Blue Tray



Stain-Free Tray

2



PUSH BUTTON



3



GET RESULTS



**Complete Reliability**

Ensure repeatable and consistent results.

**Preset protocols** — image acquisition, analysis, and report parameters are customized and saved for effortless reproducibility

**Workflow-driven software** — imaging and report options are customized using a guided protocol setup



**EZ Integration**

Unparalleled imaging simplicity and efficiency.

**Automated functionality** — automatic image acquisition, data analysis, and report generation in one push of a button

**Publication-quality images** — publication-ready images at your specified resolution without additional image editing software

26 cm

38 cm



# 2



## PUSH BUTTON



# 3



## GET RESULTS



### Stain-Free Technology

Eliminate the traditional SDS-PAGE staining bottleneck.

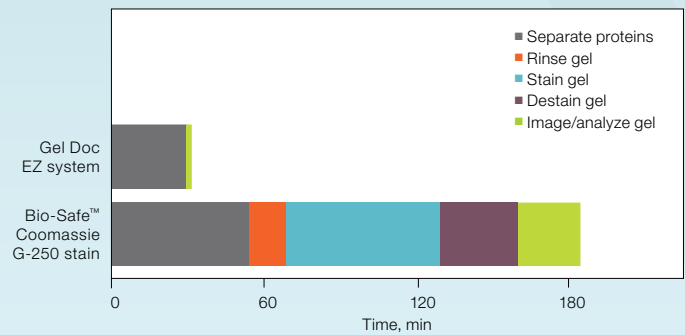
**Expedited workflow** — convert your 3-hour Coomassie protocol into a 5-minute image step

**Compatibility** — stain-free gels are western blot compatible, allowing you to visualize electrophoretic separation and verify transfer efficiency prior to western blotting

**Sensitivity** — expect equal or better sensitivity compared to Coomassie staining

**Green** — be free from organic waste disposal concerns

### Gel Doc EZ System vs. Traditional Coomassie Staining Methods



Stain-Free System

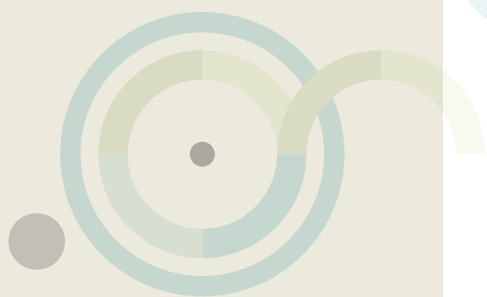


Coomassie Staining



For more information and data, visit [www.bio-rad.com/geldocEZ](http://www.bio-rad.com/geldocEZ).

# ...all with a push of a button



# 1

Pick the tray for your application



### UV Tray

For use with ethidium bromide, SYBR<sup>®</sup>, Oriole<sup>™</sup> fluorescent gel, GelRed, SYPRO Ruby, Coomassie Fluor Orange, and Krypton stains.



### White Tray

For use with protein applications that use Coomassie Blue, copper, silver, and zinc stains.



### Blue Tray

For use with nucleic acid applications that use GelGreen, SYBR<sup>®</sup> Green, SYBR<sup>®</sup> Safe, and SYBR<sup>®</sup> Gold stains.



### Stain-Free Tray

For use with stain-free gels, such as Mini-PROTEAN<sup>®</sup> and Criterion<sup>™</sup> TGX Stain-Free<sup>™</sup> gels and stain-free blots.

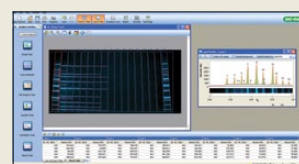
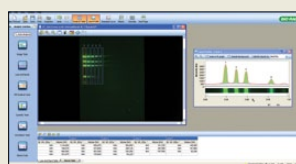
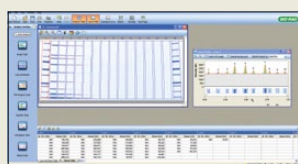
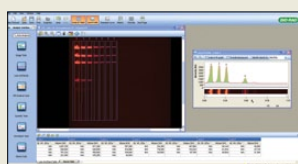
# 2

Press the green button



# 3

Get your results



## Ordering Information


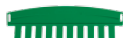




Catalog #	Description
170-8270	Gel Doc EZ System, includes stain-free sample tray
170-8271	UV Sample Tray
170-8272	White Sample Tray
170-8273	Blue Sample Tray
170-8274	Stain-Free Sample Tray
170-8276	Sample Tray Holder

### System Solutions






170-8300	Gel Doc EZ System and Mini-Format Starter Kit
170-8301	Gel Doc EZ System and Midi-Format Starter Kit
170-8302	V3 EZ for Mini Gels
170-8303	V3 EZ for Midi Gels

### Accessories

170-9690	Image Lab Software
170-7581	Mitsubishi Thermal Printer Paper
170-8089	Mitsubishi Thermal Printer
170-8097	Standard 302 nm UV Lamps

Description	 10-Well 30 µl	 10-Well 50 µl	 15-Well 15 µl	 IPG/prep 450 µl	 12-Well 20 µl	 8+1-Well 30 µl
<b>Mini-PROTEAN TGX Stain-Free Precast Gels</b>						
7.5%	456-8023	456-8024	456-8026	456-8021	456-8025	456-8029
10%	456-8033	456-8034	456-8036	456-8031	456-8035	456-8039
12%	456-8043	456-8044	456-8046	456-8041	456-8045	456-8049
4–15%	456-8083	456-8084	456-8086	456-8081	456-8085	456-8089
4–20%	456-8093	456-8094	456-8096	456-8091	456-8095	456-8099
8–16%	456-8103	456-8104	456-8106	456-8101	456-8105	456-8109
Any kD	456-8123	456-8124	456-8126	456-8121	456-8125	456-8129

All formats are available as both ten packs (catalog numbers listed) and two packs. To order as a two pack, add an "S" to the end of the catalog number for the corresponding ten pack.

Description	 12+2*-Well 45 µl	 18-Well 30 µl	 26-Well 15 µl	 Prep+2*-Well 800 µl	 IPG+1*-Well 11 cm IPG Strip
<b>Criterion TGX Stain-Free Precast Gels**</b>					
7.5%	567-8023	567-8024	567-8025	—	—
10%	567-8033	567-8034	567-8035	—	—
12%	567-8043	567-8044	567-8045	—	—
18%	567-8073	567-8074	567-8075	567-8072	567-8071
4–15%	567-8083	567-8084	567-8085	567-8082	567-8081
4–20%	567-8093	567-8094	567-8095	567-8092	567-8091
8–16%	567-8103	567-8104	567-8105	567-8102	567-8101
10–20%	567-8113	567-8114	567-8115	567-8112	567-8111
Any kD	567-8123	567-8124	567-8125	567-8122	567-8121

\* Reference well accommodates 15 µl of markers/standards. \*\* Criterion TGX Stain-Free gels are sold as a single gel.

Coomassie is a trademark of BASF Aktiengesellschaft. Excel is a trademark of Microsoft Corporation. GelGreen and GelRed are trademarks of Biotium, Inc. Krypton is a trademark of Thermo Fisher Scientific Inc. Photoshop is a trademark of Adobe Systems Incorporated. SYBR is a trademark of Life Technologies Corporation.

Bio-Rad Laboratories, Inc. is licensed by Invitrogen Corporation to sell SYPRO products for research use only under U.S. Patent Number 5,616,502.



**Bio-Rad  
Laboratories, Inc.**

Life Science  
Group

**Web site** [www.bio-rad.com](http://www.bio-rad.com) **USA** 800 424 6723 **Australia** 61 2 9914 2800 **Austria** 01 877 89 01 **Belgium** 09 385 55 11 **Brazil** 55 11 5044 5699  
**Canada** 905 364 3435 **China** 86 21 6169 8500 **Czech Republic** 420 241 430 532 **Denmark** 44 52 10 00 **Finland** 09 804 22 00  
**France** 01 47 95 69 65 **Germany** 089 31 884 0 **Greece** 30 210 9532 220 **Hong Kong** 852 2789 3300 **Hungary** 36 1 459 6100 **India** 91 124 4029300  
**Israel** 03 963 6050 **Italy** 39 02 216091 **Japan** 03 6361 7000 **Korea** 82 2 3473 4460 **Mexico** 52 555 488 7670 **The Netherlands** 0318 540666  
**New Zealand** 64 9 415 2280 **Norway** 23 38 41 30 **Poland** 48 22 331 99 99 **Portugal** 351 21 472 7700 **Russia** 7 495 721 14 04  
**Singapore** 65 6415 3188 **South Africa** 27 861 246 723 **Spain** 34 91 590 5200 **Sweden** 08 555 12700 **Switzerland** 026 674 55 05  
**Taiwan** 886 2 2578 7189 **Thailand** 800 88 22 88 **United Kingdom** 020 8328 2000